

# Breakdowns

Stock numbers listed in the breakdown section are manufacture stock numbers.

Breakdowns proved courtesy of EZEE Milking.

## #10670

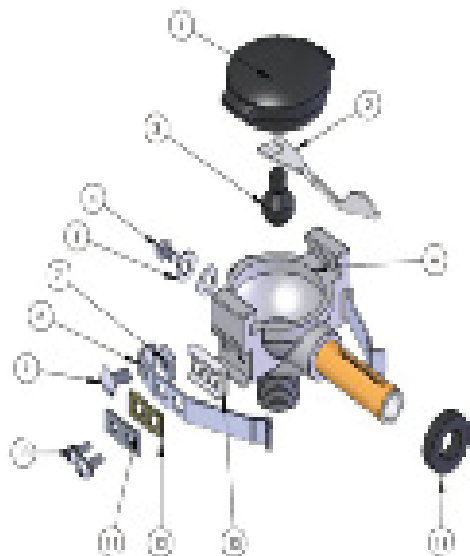
2' Air Blow Valve for 1 1/2 check Y, 3/8" NPT



ITEM	PART NUMBER	DESCRIPTION	QTY
1	10674	Stainless top	1
2	17130	1 1/2" Heavy duty clamp	1
3	10685	Stainless screen	1
4	10687	Filter (Pack of 10)	1
5	10678	Stainless clip for Air Blow Vave Spring	1
6	10677	Spring	1
7	10683	Plastic holder for Air Blow Valve Shutoff	1
8	10672	Stainless base	1
9	10681	Rubber shutoff with stem	1

## #23810

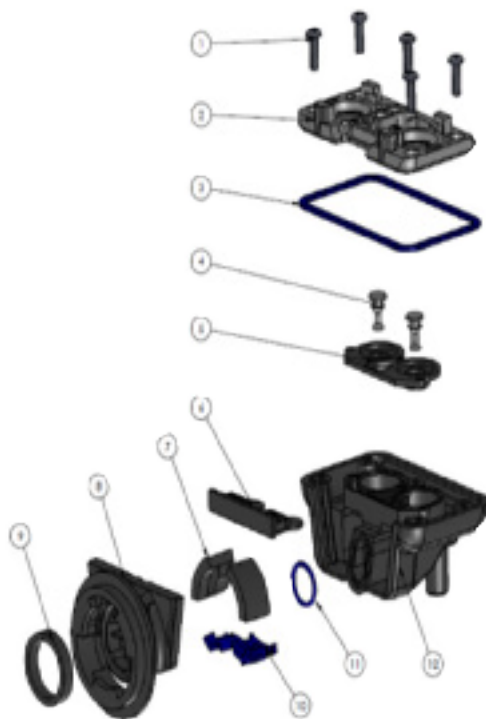
Replacement DL alternating stallcock



ITEM	PART NUMBER	DESCRIPTION	QTY
1	23885	Replacement rubber cap	1
2	23882	Replacement stainless insert	1
3	23880	Replacement rubber plug	1
4	23899	Replacement ground screw	1
5	23897	Replacement flat washer	2
6	23890	Replacement stallcock body	1
7	23896	Replacement square nut	2
8	23893	Replacement stainless contact arm	2
9	23895	Replacement large screw	2
10	23898	Replacement small side screw w/ tooth washer	4
11	23892	Replacement stainless plate	2
12	23887	Replacemnt electrical insulator	2
13	23888	Replacement plastic plastic plate	2
14	23875	Replacement gasket	1

# #43311

Replacement base kit for Bayonet Dellatron pulsator

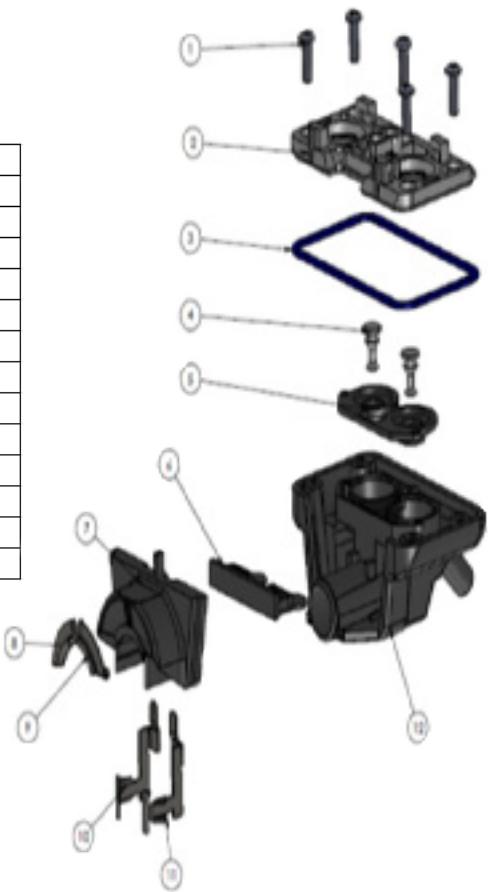


ITEM	PART NUMBER	DESCRIPTION	QTY
1	98971	Replacement screw for white base plate	5
2	43305	Replacement white base plate	1
3	98951	Replacement blue gasket	1
4	98941	Replacement white axle for diaphragm	2
5	98946	Replacement top diaphragm for New Style Dellatron	1
6	98947	Replacement bottom diaphragm for New Style Dellatron	1
7	43307	Replacement rubber bumper for bayonet bracket	2
8	43313	Replacement bayonet bracket	1
9	98669	Replacement seal for bayonet bracket	1
10	43302	Replacement blue base clip	1
11	98976	Replacement base o-ring	1
12	43310	Replacement bayonet base only	1
	98968	Replacement 2 piece rebuild kits for new style Dellatron (includes: 5-6)	

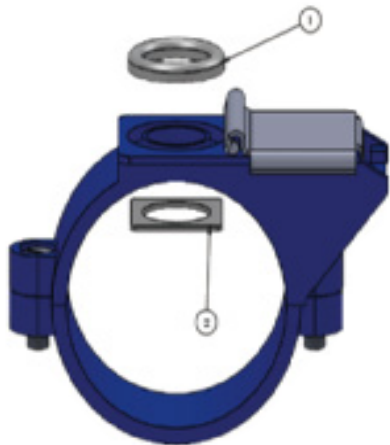
# #43322

Replacement base kit for stallcock Dellatron Pulsator

ITEM	PART NUMBER	DESCRIPTION	QTY
1	98971	Replacement screw for white base plate	5
2	43305	Replacement white base plate	1
3	98951	Replacement blue gasket	1
4	98941	Replacement white axle for diaphragm	2
5	98946	Replacement top diaphragm for New Style Dellatron	1
6	98947	Replacement bottom diaphragm for New Style Dellatron	1
7	43324	Replacement base slide for stallcock mount (includes: 8-11)	1
8	43332	Replacement left hand guard	1
9	43331	Replacement Right hand guard	1
10	43328	Replacement left hand contact pin	1
11	43327	Replacement right hand pin	1
12	43320	Replacement stallcock base only	1
		Replacement 2 piece rebuild kit for new style Dellatron (include:5-6)	

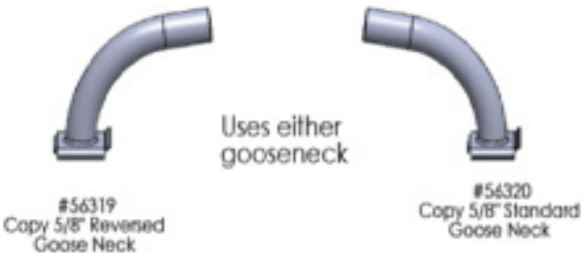


# Blue Plastic Milk Valves

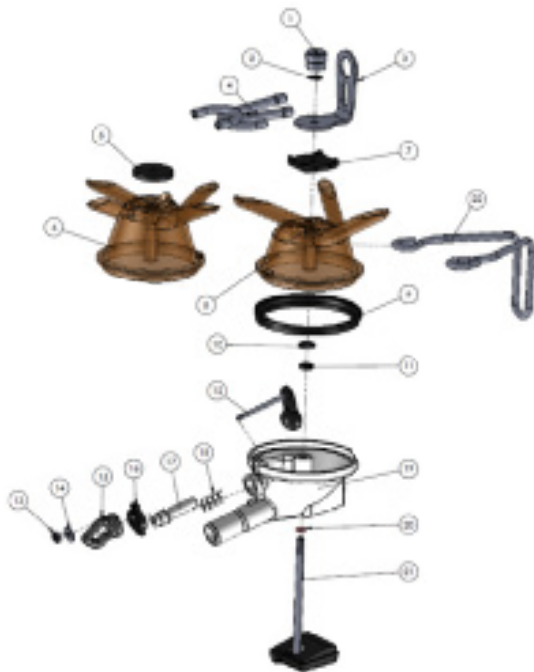


- #56421 1 1/2" Blue Plastic Milk Valves
- #56422 2" Blue Plastic Milk Valves
- #56423 2 1/2" Blue Plastic Milk Valves
- #56424 3" Blue Plastic Milk Valves

ITEM	PART NUMBER	DESCRIPTION	QTY
1	56325	Replacement gray seal	1
2	56327	Replacement flat gasket	1



# BouMatic Flo Star Claw



ITEM	PART NUMBER	DESCRIPTION	QTY
1	14410	Replacement top knob	1
2	14411	Replacement star lock washer for top knob	1
3	14412	Replacement top hanger	1
4	11445	Replacement 9/32" air tee	1
5	14431	Replacement top seal for Standard Flo-Star	1
6	14429	Replacement top for Standard Flo Star, VENTED	1
	14430	Replacement top for Standard, NON-VENTED	1
7	14437	Replacement top seal for Classic Flo-Star	1
8	14451	Replacement top for Classic Flo Star, VENTED	1
	14450	Replacement top for Classic Flow Star, NON-VENTED	1
9	14440	Replacement gasket	1
10	14406	Replacement stainless ring got center seal	1
11	14407	Replacement center seal	1
12	14445	Replacement shutoff valve	1
13	14402	Replacement nut for Flo-Star Valve	1
14	14403	Replacement washer for Flo-Star valve	1
15	14449	Replacement handle for Flo-Star shutoff	1
16	14445	Replacement shutoff clip	1
17	14447	Replacement sleeve for Flo-Star shutoff	1
18	14409	Replacement spring for Flo-Star valve	1
19	14425	Replacement claw base WITH valve hole	1
	14426	Replacement claw base WITHOUT valve hole	1
20	14406	Replacement silicone O-ring for bumper	1
21	14415	Replacement bumper for Classic Flo Star	1
	14414	Replacement bumper for Standard Flo Star	1
22	14435	Replacement CIP stainless hanger	1
23	14420	Replacement 9 piece kit for Flo-Star with valve. (includes: 2,5,7,9,11,12,16,18,20)	1
24	14421	Replacement 6 piece kit for Flo-Star without Valve (includes: 2,5,7,9,11,20)	1
25	14443	Replacement valve kit for Flo-Star (includes: 12-15)	1

- #14391 Replacement 5/8" ID Standard Flo-Star claw with valve, vented
- #14392 Replacement 5/8" ID Standard Flo-Star claw without valve, vented
- #14393 Replacement 5/8" IC Classic Flo-Star claw with valve, vented
- #14394 Replacement 5/8" ID Classic Flo-Star without valve, vented
- #14396 Replacement 5/8" ID Classic Flo-Star with valve, non-vented
- #14397 Replacement 5/8" ID Classic Flo-Star with valve, non-vented
- #14398 Replacement 5/8" ID Classic Flo-Star without valve, non-vented

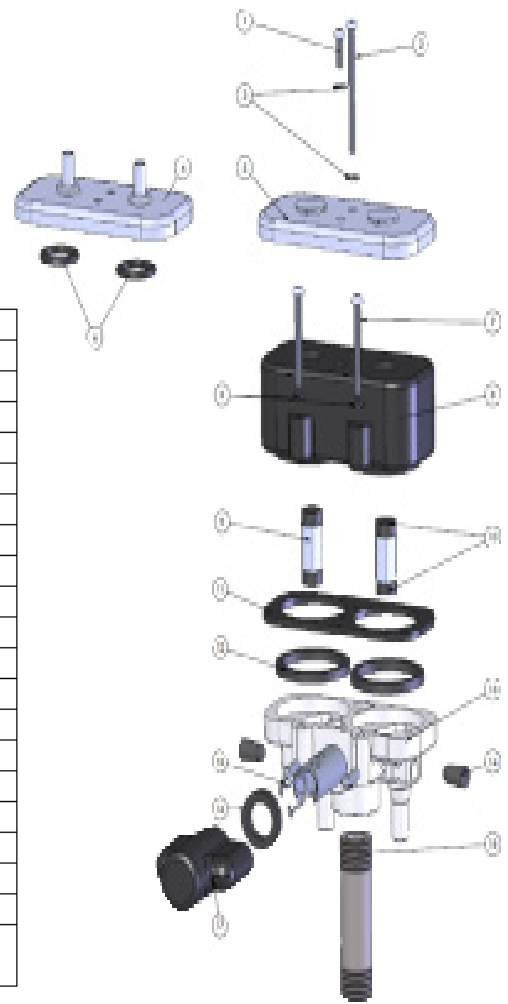
# **#43186**

Replacement BM style pulsator, WITH fresh air parlor model

# **#43187**

Replacement BM style pulsator, WITHOUT fresh air parlor model

ITEM	PART NUMBER	DESCRIPTION	QTY
1	43254	Replacement short screw	1
2	43252	Replacement long screw	1
3	43255	Replacement star washer	4
4	43222	Replacement cover with fresh air	1
5	43223	Replacement standard cover	1
6	43226	Replacement O-ring	2
7	43253	Replacement medium screw	2
8	43215	Replacement black coil, HI FLO	1
9	43231	Replacement piston with rubber parts (includes: 10)	2
10	43241	Replacement top and bottom cap for piston	4
11	43218	Replacement foam filter	2
12	43232	Replacement coil seal	1
13	43213	Replacement base kit (includes: 12-17)	1
14	43249	Replacement side plug	2
15	43251	Replacement spring	1
16	43233	Replacement front seal	1
17	43248	Replacement nipple protector	1
18	65563	1/2" X 2 1/2" galvanized pipe	1
	43240	Small Repair Kit (includes: 9, 12, 16)	
	43245	Large Repair Kit (includes: 1-3, 7, 9, 11-12, 14-16, 1-43329 dust cap not pictured)	

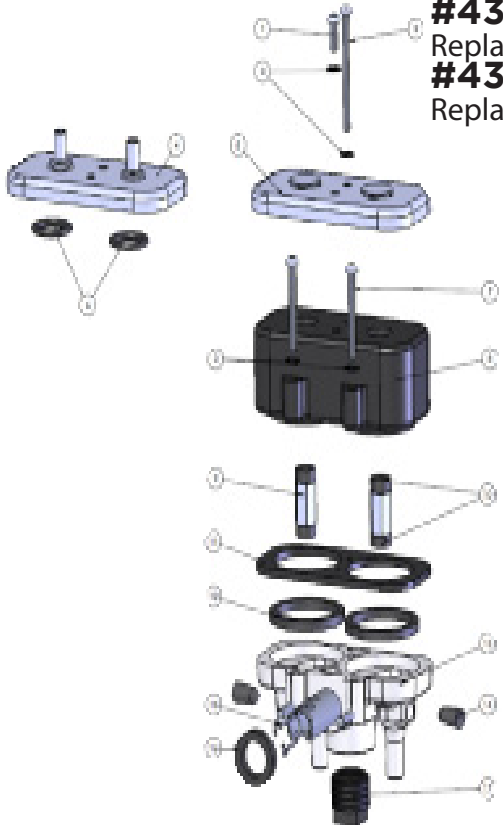


# **#43184**

Replacement BM style pulsator, WITH fresh air stanchion barn model

# **#43185**

Replacement BM style pulsator, WITHOUT fresh air stanchion barn model



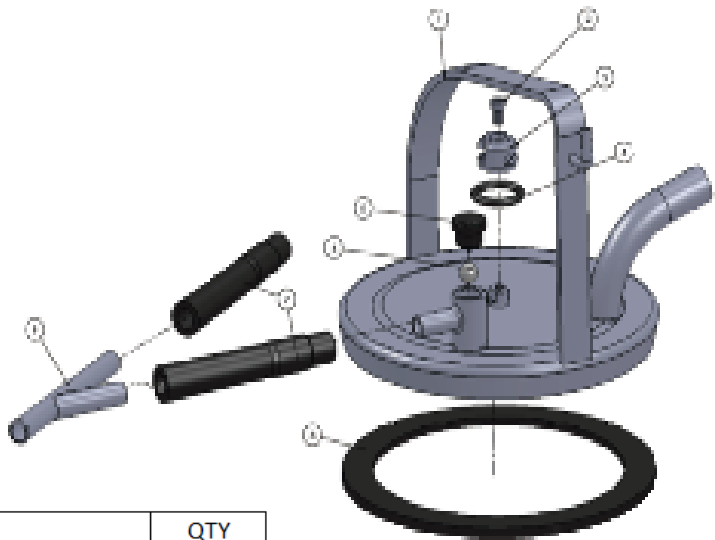
ITEM	PART NUMBER	DESCRIPTION	QTY
1	43254	Replacement short screw	1
2	43252	Replacement long screws	1
3	43255	Replacement star washer	4
4	43222	Replacement cover with Fresh Air	1
5	43223	Replacement standard cover	1
6	43226	Replacement O-ring	2
7	43253	Replacement medium screw	2
8	43215	Replacement black coil, HI FLO	1
9	43231	Replacement piston with rubber parts (includes: 10)	2
10	43241	Replacement top and bottom piston cap	4
11	43218	Replacement foam filter	2
12	43232	Replacement coil seal	1
13	43216	Replacement base kit (includes: 12-17)	1
14	43249	Replacement side plug	2
15	43251	Replacement spring	1
16	43233	Replacement front seal	1
17	43219	Replacement plug	1
	43240	Small Repair Kit (includes: 9, 12, 16)	
	43245	Large Repair Kit (includes: 1-3, 7, 9, 11-12, 14-16, 1-43329 dust cap not pictured)	

### #33075

Bucket lid for WF pulsator with parts, 5/8" I.D.

### #33080

Bucket lid for WF pulsator with parts, 3/4" I.D.

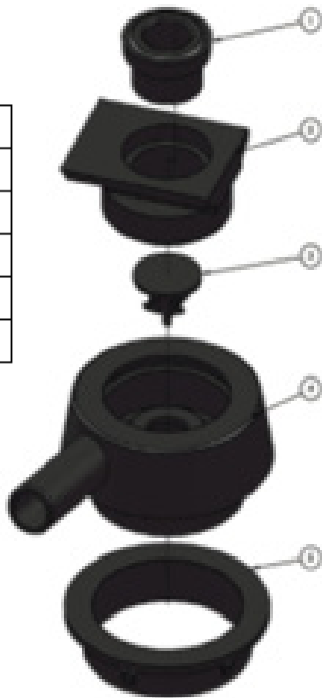


ITEM	PART NUMBER	DESCRIPTION	QTY
1	33076	Bucket lid for WF pulsator, 5/8" I.D. LESS PARTS	1
1	33081	Bucket lid for WF pulsator, 3/4" I.D. LESS PARTS	1
2	17528	Replacement screw	1
3	17527	Replacement lid base	1
4	17526	Replacement o-ring	1
5	17533	Replacement plug	1
6	17531	Replacement ball	1
7	25188	Replacement 04TS-SPEC milk tube	2
8	25193	Replacement lid fasket	1
9	17519	Replacement gray plastic Y	1

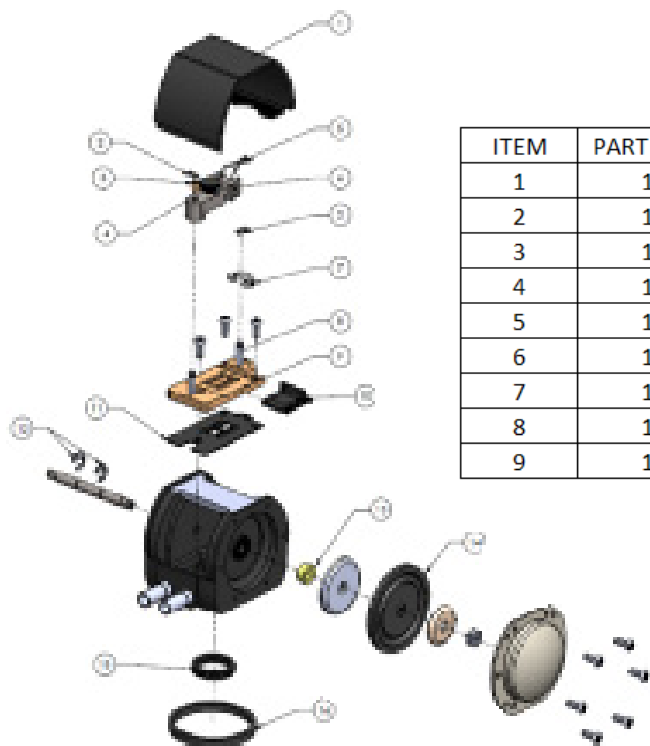
### #23031

Complete adaptor for D95 to DL bucket lid

ITEM	PART NUMBER	DESCRIPTION	QTY
1	23029	Replacement top rubber grommet	1
2	23040	Replacement top plastic slide	1
3	23024	Replacement check valve	1
4	23056	Replacement adaptor only	1
5	23028	Replacement chamber gasket	1



## HP 100 Pulsator



ITEM	PART NUMBER	DESCRIPTION	QTY
1	10674	Stainless top	1
2	17130	1 1/2" Heavy duty clamp	1
3	10685	Stainless screen	1
4	10687	Filter (Pack of 10)	1
5	10678	Stainless clip for Air Blow Valve Spring	1
6	10677	Spring	1
7	10683	Plastic holder for Air Blow Valve Shutoff	1
8	10672	Stainless base	1
9	10681	Rubber shutoff with stem	1

### #43350-100B

Replacement pulsator with 12V coils

### #43352-100B

Replacement pulsator with 24V coils

ITEM	PART NUMBER	DESCRIPTION	QTY
1	98978	Replacement top plug	1
2	98948	Replacement screw for cover	1
3	98950	Replacement Cover kit (includes: 1-4,6,98954, 7, 13)	1
4	98952	Replacement fresh air nipple	1
5	98956	Replacement wiring harness, 18"	1
	98957	Replacement wiring harness, 5'	
6	98953	Replacement fresh air screen	1
	98954	Replacement blank plug (not pictured)	
7	98949	Replacement grommet for wiring harness	1
8	43315	Replacement 12 volt coil	2
	98395	Replacement red 24 volt coil (not pictured)	
9	98974	Replacement coil O-ring	2
10	43317	Replacement magnetic plate	2
11	98971	Replacement screw for white base plate	1
12	43305	Replacement white base plate	1
13	98951	Replacement blue gasket	1
14	98941	Replacement white axle for diaphragm	2
15	98946	Replacement top diaphragm for new style Dellatron	1
16	98947	Replacement bottom diaphragm for new style Dellatron	1
17	43307	Replacement rubber for bayonett bracket	2
18	43313	Replacement bayonett bracket	1
19	98669	Replacement seal for SST2 valve, ECO Lite sensor, bayonett bracket	1
20	43308	Replacement threaded base mount	1
21	43302	Replacement blue base clip	1
22	98976	Replacement base O-ring	1
23	43310	Replacement bayonett base only	1
	98960	Replacement repair kit new style Dellatron (includes: 9, 11, 14-16, & 22)	
	98968	Replacement 2 piece rebuild kit for new style Dellatron (includes: 15-16)	



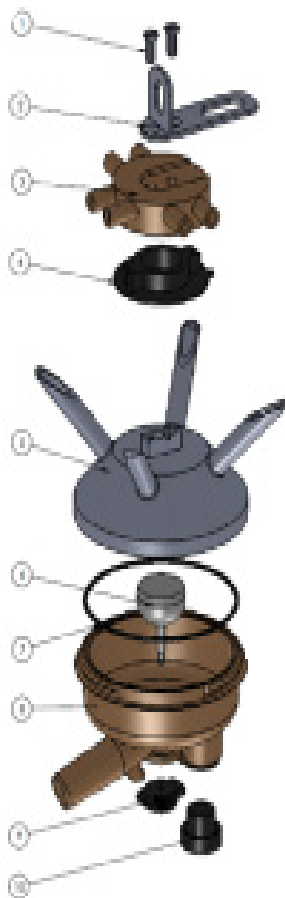


## #10875

Replacement Super Lite claw WITHOUT valve, with USED original top

## #10876

Replacement Super Lite claw WITH valve, with USED original top



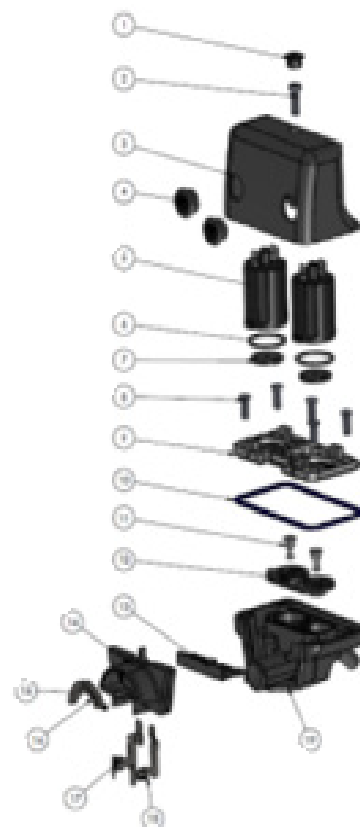
ITEM	PART NUMBER	DESCRIPTION	QTY
1	10883	Replacement screw	2
2	10885	Replacement top stainless hanger with loop	1
3	10884	Replacement air chamber	1
4	10899	Replacement gasket for air chamber	1
5	112070	Used Original stainless top	1
6	10862	Replacement white shutoff	1
7	10873	Replacement bowl gasket	1
8	10895	Replacement Super bowl with valve hole	1
	10894	Replacement Super bowl without valve hole	
9	10864	Replacement shutoff clip	1
10	10881	Replacement bumper	1
11	10897	Replacement bowl kit for Super claw WITH valve (includes: 6-10)	1
12	10896	Replacement bowl kit for Super claw WITHOUT valve (includes: 7, 8a, 10)	1

**#43361** 60/40 200SC replacement pulsator, 12VDC

**#43366** 65/35 200SC replacement pulsator, 12VDC

**#43371** 70/30 200SC replacement pulsator, 12VDC

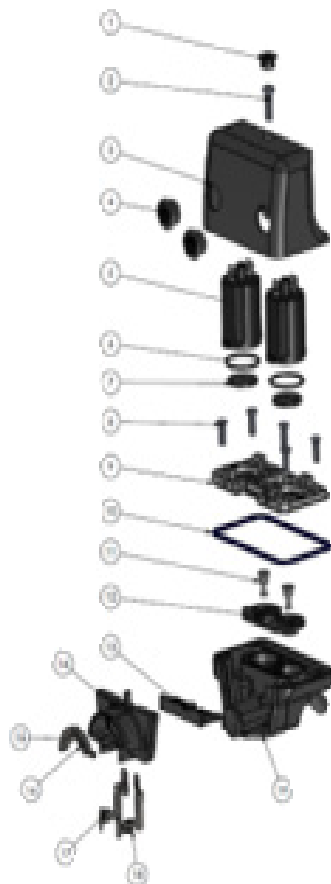
ITEM	PART NUMBER	DESCRIPTION	QTY
1	98978	Replacement top plug	1
2	98948	Replacement screw for cover	1
3	43360	Replacement 60/40 Circuit board with cover	1
	43365	Replacement 65/35 Circuit board with cover	
	43370	Replacement 70/30 Circuit board with cover	
	43364	Replacement cover only for 200SC	
	43364	Replacement 60/40 circuit board & wiring harness only, less cover	
	43369	Replacement 65/35 circuit board & wiring harness only, less cover	
	43374	Replacement 70/30 circuit board & wiring harness only, less cover	
4	98953	Replacement fresh air screen	2
5	43315	Replacement 12 volt coil	2
6	98974	Replacement coil o ring	2
7	43317	Replacement magnetic plate	2
8	98971	Replacement screw for white base plate	5
9	43305	Replacement white base plate	1
10	98951	Replacement blue gasket	1
11	98941	Replacement white axles for diaphragm	2
12	98946	Replacement top diaphragm for New Style Delatron	1
13	98947	Replacement bottom diaphragm for New Style Delatron	1
14	43324	Replacement base slide for stallcock mount. (includes: 15-18)	1
15	43312	Replacement left hand guard	1
16	43331	Replacement right hand guard	1
17	43328	Replacement left hand contact pin	1
18	43327	Replacement right hand contact pin	1
19	43320	Replacement stallcock base only	1
	98960	Replacement Repair kit for new style Delatron (includes: 6, 8, 11-13)	
	98968	Replacement 2 piece kit for new style Delatron (includes: 12-13)	



**#43361** 40 200SC replacement pulsator, 12VDC

**#43366** 65/35 200SC replacement pulsator, 12VDC

**#43371** 70/30 200SC replacement pulsator, 12VDC



ITEM	PART NUMBER	DESCRIPTION	QTY
1	98978	Replacement top plug	1
2	98948	Replacement screw for cover	1
3	43360	Replacement 60/40 Circuit board with cover	1
	43365	Replacement 65/35 Circuit board with cover	
	43370	Replacement 70/30 Circuit board with cover	
	43369	Replacement cover only for 200SC	
	43364	Replacement 60/40 circuit board & wiring harness only, less cover	
	43369	Replacement 65/35 circuit board & wiring harness only, less cover	
	43374	Replacement 70/30 circuit board & wiring harness only, less cover	
4	98953	Replacement fresh air screen	2
5	43315	Replacement 12 volt coil	2
6	98974	Replacement coil u ring	2
7	43317	Replacement magnetic plate	2
8	98971	Replacement screw for white base plate	5
9	43305	Replacement white base plate	1
10	98951	Replacement blue gasket	1
11	98941	Replacement white axles for diaphragm	2
12	98946	Replacement top diaphragm for New Style Delatron	1
13	98947	Replacement bottom diaphragm for New Style Delatron	1
14	43324	Replacement base slide for stallcock mount. (includes: 15-18)	1
15	43312	Replacement left hand guard	1
16	43331	Replacement right hand guard	1
17	43328	Replacement left hand contact pin	1
18	43327	Replacement right hand contact pin	1
19	43320	Replacement stallcock base only	1
	98960	Replacement Repair kit for new style Delatron (includes: 5,8,11-13)	
	98968	Replacement 2 piece kit for new style Delatron (includes: 12-13)	

## #10867

Complete replacement alternating Flow-view claw

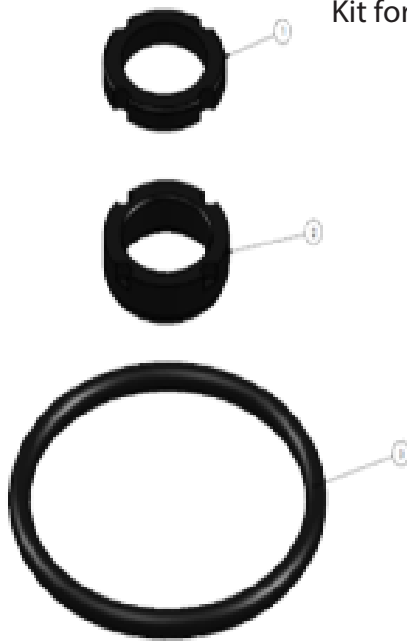


ITEM	PART NUMBER	DESCRIPTION	QTY
1	10882	Replacement vent	1
2	10869	Replacement alternating stainless top	1
3	10865	Replacement air bowl gasket	1
4	10861	Replacement shutoff	1
5	10860	Replacement full-view bowl, 180cc	1
6	10864	Replacement shutoff clip	1
7	10670	Replacement bumper	1



## #10395

Kit for Kleen-Flo D-Style milk pump, 3 piece



ITEM	PART NUMBER	DESCRIPTION	QTY
1	10425	Replacement rubber seal for D-Style Milk Pump	1
2	10426	Carbon seal for D-Style Milk Pump	1
3	10427	Replacement 4" O-ring for D-Style Milk Pump	1

**#14326** Replacement 300cc claw with valve, S.S. 9/32", side to side

**#14327** Replacement 300cc claw with valve, S.S. 9/32", back to front

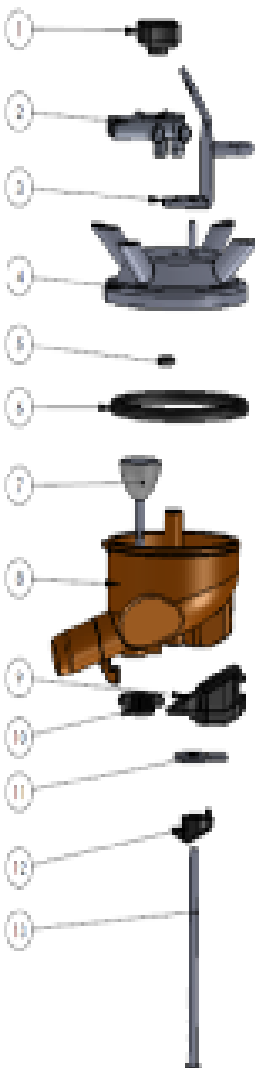
**#14328** Replacement 300cc claw with valve, S.S. 3/8" x 1/4", back to front

**#14329** Replacement 300cc claw with valve, S.S. 3/8 x 9/32, back to front

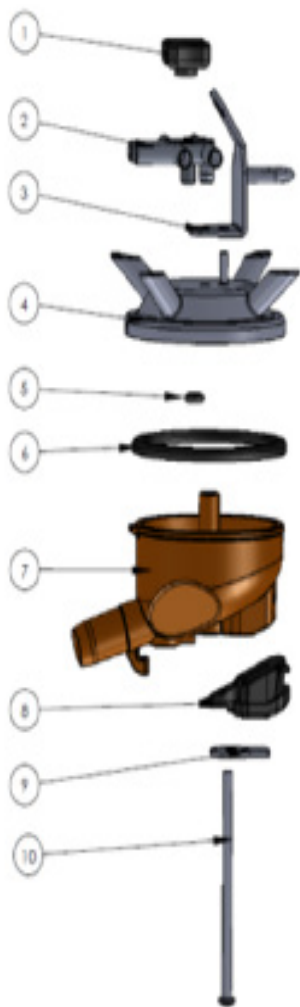
**#14333** Replacement 300cc claw with valve, S.S. 1/4", back to front

**#14300** Replacement 300cc claw with valve, plastic, 9/32' side to side

**#14331** Replacement 300cc claw with valve, plastic, 9/32" back to front



ITEM	PART NUMBER	DESCRIPTION	QTY
1	14313	Replacement black nut	1
2	14320	Replacement Stainless 9/32" x 9/32" Side to Side Tee	
	14324	Replacement Stainless 9/32" x 9/32" Back to Front Tee	
	14321	Replacement Stainless 3/8" x 3/8" Back to Front Tee	
	14323	Replacement Stainless 3/8" x 1/4" Back to Front Tee	
	14336	Replacement Stainless 1/4" x 1/4" Back to Front Tee	
	14309	Replacement Plastic 9/32" x 9/32" Side to Side Tee	
	14335	Replacement Plastic 9/32" x 9/32" Back to Front Tee	
3	14311	Replacement Stainless top hanger with loop	1
	14346	Replacement Stainless to hanger with hook	
4	14315	Replacement Stainless top, Vented	1
	14340	Replacement Stainless top, Non-vented	
5	14307	Replacement small gray center gasket	1
6	14305	Replacement bowl gasket	1
7	14351	Replacement gray shut-off valve	1
8	14350	Replacement RADEL bowl with hole	1
9	14306	Replacement rubber bumper	1
10	14302	Replacement shut-off clip	1
11	14318	Replacement stainless flat tab	1
12	14304	Replacement bolt holder	1
13	14308	Replacement bolt for claw with valve	1
14	14355	Rubber parts kit for claw with valve, (includes: 5-7, 9 & 10)	1



**#13304** Replacement claw without valve, S.S. 9/32', Side to side

**#13305** Reaplacement claw without valve, S.S. 9/32", back to front

**#13306** Replacement claw without valve, S.S. 3/8" x 1/4", back to front

**#13307** Replacement claw without valve, S.S. 3/8' x 9/32", back to front

**#13314** Reaplacement claw without value, S.S. 1/4', back to front

**#13300** Replacement claw without valve, Plastic, 9/32' side to side

**#13312** Replacement claw without valve, plastic, 9/32' back to front

ITEM	PART NUMBER	DESCRIPTION	QTY
1	14313	Replacement black nut	1
2	14320	Replacement Stainless 9/32" x 9/32" Side to Side Tee	
	14324	Replacement Stainless 9/32" x 9/32" Back to Front Tee	
	14321	Replacement Stainless 3/8" x 3/8" Back to Front Tee	
	14323	Replacement Stainless 3/8" x 1/4" Back to Front Tee	
	14336	Replacement Stainless 1/4" x 1/4" Back to Front Tee	
	14309	Replacement Plastic 9/32" x 9/32" Side to Side Tee	
	14335	Replacement Plastic 9/32" x 9/32" Back to Front Tee	
	14311	Replacement Stainless top hanger with loop	1
	14346	Replacement Stainless to hanger with hook	
4	14315	Replacement Stainless top, Vented	1
	14340	Replacement Stainless top, Non-vented	
5	14307	Replacement small gray center gasket	1
6	14305	Replacement bowl gasket	1
7	14350	Replacement RADEL bowl with hole	1
8	14306	Replacement rubber bumper	1
9	14318	Replacement stainless flat tab	1
10	13308	Replacement bolt for claw without valve	1
11	13325	Rubber parts kit for claw without hole, (includes: 5, 6 & 8)	



## Magnetic Pulsator

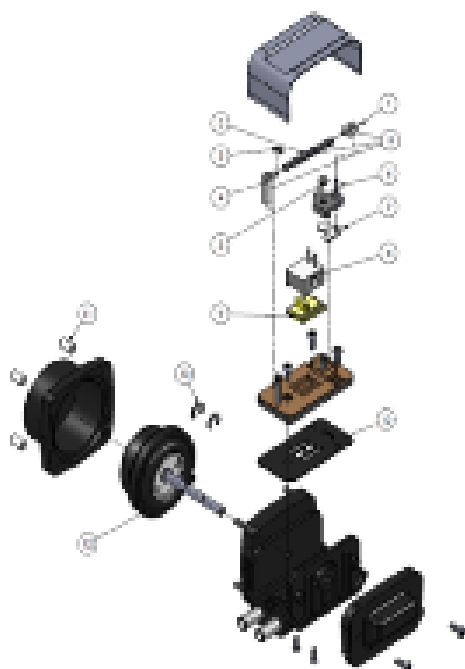
ITEM	PART NUMBER	DESCRIPTION	QTY
1	20137	Replacement fly guard	1
2	20135	Replacement magnet	1
3	20139	Replacement piston cap	1
4	117670	Used piston new caps for magnetic pulsator (includes #3)	1
5	20133	Replacement Spring	1
6	20134	Replacement insulating plate	1



## #17890 Mark II Regulator

ITEM	PART NUMBER	DESCRIPTION	QTY
1	17862	Replacment top rubber knob	1
2	17867	Filter cap	1
3	17852	Replacement top dome filter	1
4	17865	Adjuster housing	1
5	17869	Dome diaphragm	1
6	17856	Diaphragm with plate	1
7	17864	white flange assembly	1
8	17859	Rod Seal	1
9	17868	Retaining washer	1
10	17854	Flow ring	1
11	17858	Silicone outlet seal	1
12	17866	Poppet assembly	1
13	17853	Roll seal	1
14	17849	Replacement foam filter	1
	17850	Sentinel Mark II foam filter	
	17870	4 Piece repair kit for Make II (includes: 3, 6, 13 & 14)	
	17875	Worn parts kit for Mark II (includes: 1, WP, 3, 5-7, 10-11, 13-14)	

## #43075 OHTA Pulsator



ITEM	PART NUMBER	DESCRIPTION	QTY
1	43063	Spring holder B for OHTA Pulsator	1
2	43061	Spring only for OHTA Pulsator	1
3	43069	5/32 E-Clip for OHTA Pulsator	2
4	43062	Spring holder for OHTA Pulsator	1
5	43060	Spring Assembly for OHTA Pulsator	1
6	43071	Reversing valve holder for OHTA Pulsator	1
7	43070	Reversing valvefor OHTA Pulsator	1
8	43084	Slide holder for OHTA Pulsator	1
9	43085	Yellow slide for OHTA Pulsator	1
10	43081	Plate gasket for OHTA Pulsator	1
11	43065	Box nut for OHTA Pulsator	4
12	43080	Diaphragm assembly for OHTA Pulsator	1
13	20145	7/32 E-Clip for diaphragm for OHTA Pulsator	2

### #43087

Replacement white adapter kit for OHTA to HP chamber



ITEM	PART NUMBER	DESCRIPTION	QTY
1	23026	Complete chamber for HP lid, for OHTA Pulsator	1

### #43090

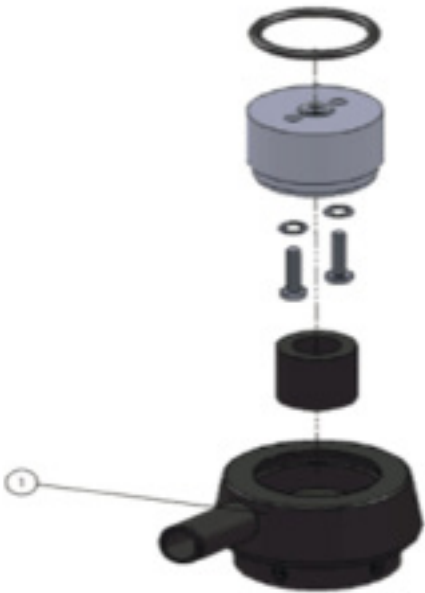
Black adaptor kit for OHTA to D#95 adaptor



ITEM	PART NUMBER	DESCRIPTION	QTY
1	23031	Complete adaptor for D#95 to DL lid	1

### #43095

Gray adaptor kit for OHTA to D#95 chamber



ITEM	PART NUMBER	DESCRIPTION	QTY
1	23031	Complete adaptor for D#95 to DL lid	1

Sta-Rite Milk Pump



ITEM	PART NUMBER	DESCRIPTION	QTY
1	59888	Housing gasket	1
2	59886	Small O-ring	1
3	59887	Carbon seal	1
4	59892	Replacement stainless 3 blade impeller	1
	59890	Replacement milk pump seal kit for Sta-Right includes 1-3	



43132  
Round or Square nipple to  
parlor conversion kit  
for Surge, Short Version



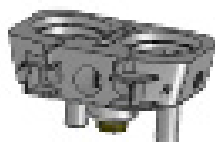
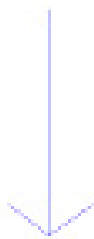
43130  
Round nipple to parlor  
conversion kit for Surge,  
Long Version



43120  
Square nipple to parlor  
conversion kit for Surge,  
Long Version



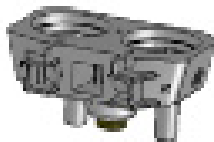
43122  
Square nipple to parlor  
conversion kit for Surge,  
Short Version



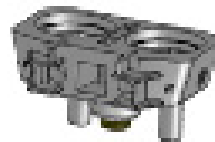
E-Zoo-Copy &  
N/S Round Nipple



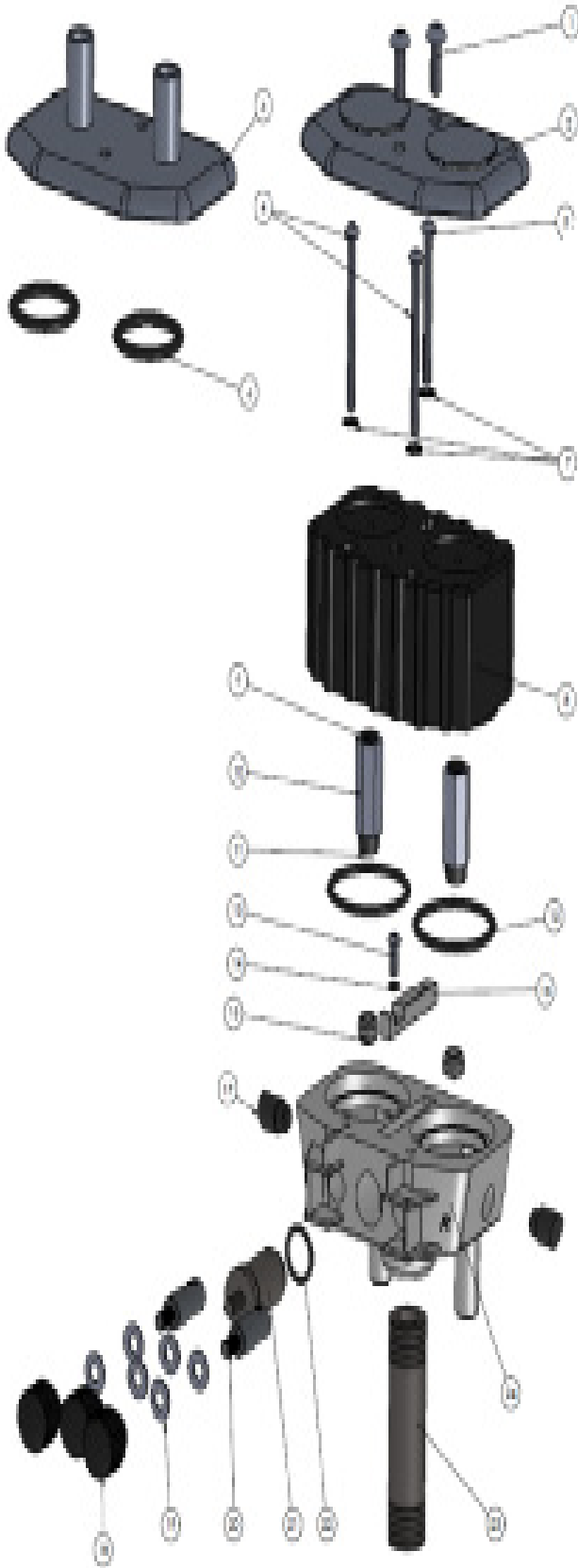
O/S Round Nipple



O/S Square Nipple



N/S Square Nipple



## #43155

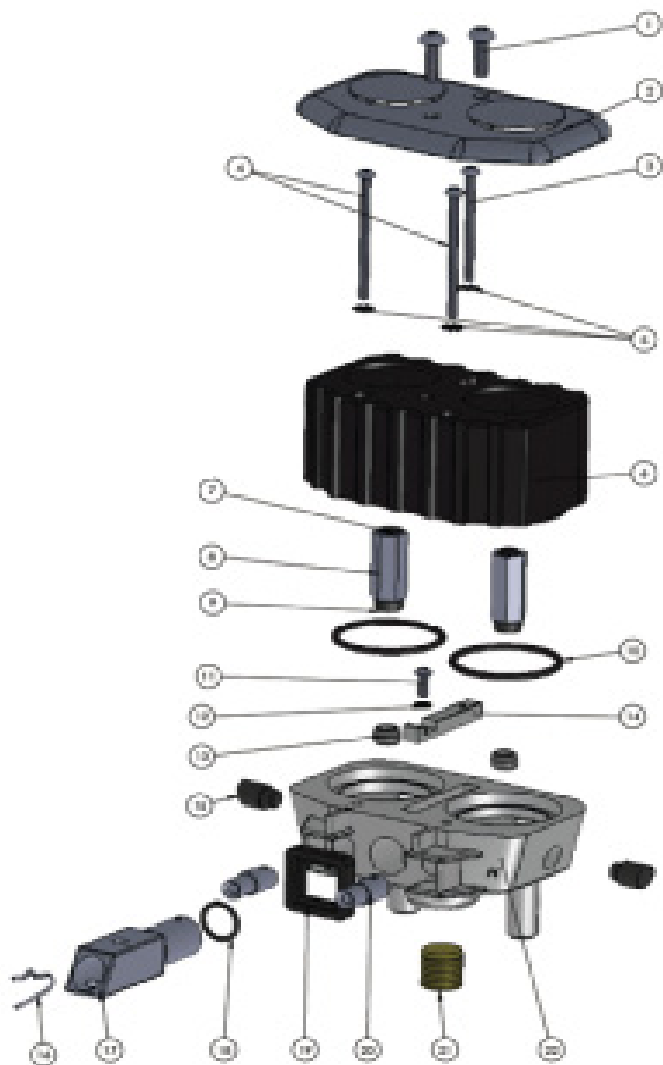
Replacement Parlor Style Pulsator for Surge,  
Standard Cover

## #43156

Replacement parlor Style Pulsator for Surge,  
Fresh Air Cover

ITEM	PART NUMBER	DESCRIPTION	QTY
1	43118	Replacement cover screw	2
2	43137	Replacement Standard cover	1
3	10600	Replacement fresh air cover	1
4	43252	Replacement long screw	2
5	43253	Replacement short screw	1
6	10601	Replacement O-ring for fresh air cover	2
7	NS5492	Replacement lock washer	3
8	43115	Replacement black coil	1
9	43108	Replacement top plug	2
10	43104	Replacement piston (includes #'s: 9-11)	2
11	43107	Replacement bottom cap	2
12	43102	Replacement O-ring	2
13	NS5510	Replacement screw for bridge	1
14	NS55492	Replacement lock washer	1
15	NS43150-2	Replacement S/S piston seat	2
16	NS43150-3	Replacement connector bridge	1
17	43171	Replacement rubber side plug	2
18	43149	Replacement knob	3
19	NS5481	Replacement washer	6
20	43125	Replacement side contact pin	2
21	NS43124	Replacement center contact pin	1
22	NS43150-7	Replacement center o-ring	1
23	43181	3/8" x 2.5" galvanized nipple	1
24	43157	Replacement Parlor Style Base Kit (includes #'s 13-24)	1
	43105	Replacement Repair Kit (includes #'s 9-12)	

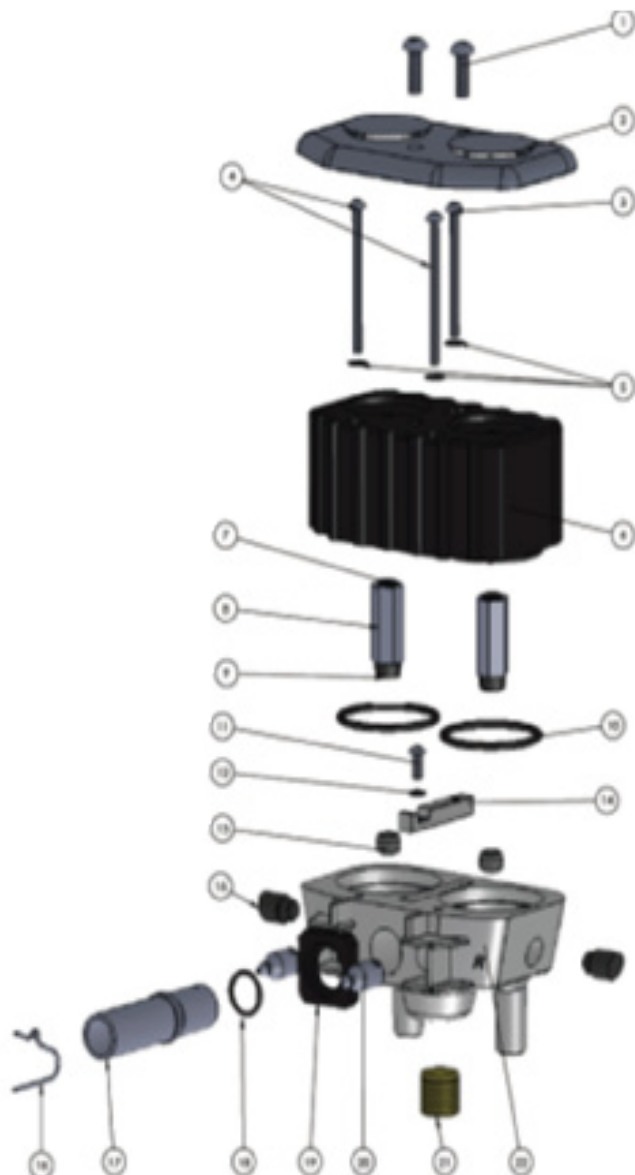




## #43160

Replacement Square Nipple Pulsator for Surge,  
Standard Cover

ITEM	PART NUMBER	DESCRIPTION	QTY
1	43118	Replacement cover screw	2
2	43137	Replacement Standard cover	1
3	10600	Replacement fresh air cover	1
4	43252	Replacement long screw	2
5	43253	Replacement short screw	1
6	10601	Replacement O-ring for fresh air cover	2
7	NS5492	Replacement lock washer	3
8	43115	Replacement black coil	1
9	43108	Replacement top plug	2
10	43104	Replacement piston (includes #'s: 9-11)	2
11	43107	Replacement bottom cap	2
12	43102	Replacement O-ring	2
13	NS5510	Replacement screw for bridge	1
14	NS55492	Replacement lock washer	1
15	NS43150-2	Replacement S/S piston seat	2
16	NS543150-3	Replacement connector bridge	1
17	43171	Replacement rubber side plug	2
18	43149	Replacement knob	3
19	NS5481	Replacement washer	6
20	43125	Replacement side contact pin	2
21	NS43124	Replacement center contact pin	1
22	NS43150-7	Replacement center o-ring	1
23	43181	3/8" x 2.5" galvanized nipple	1
24	43157	Replacement Parlor Style Base Kit (includes #'s 13-24)	1
	43105	Replacement Repair Kit (includes #'s 9-12)	

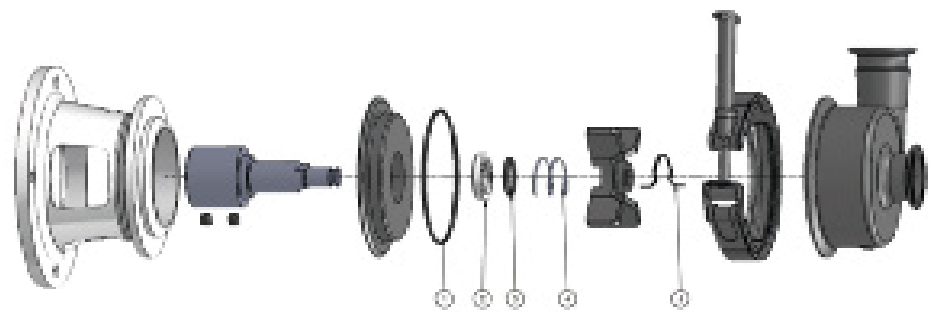


## #43165

Replacement Round Nipple Pulsator for Surge,  
Standard Cover

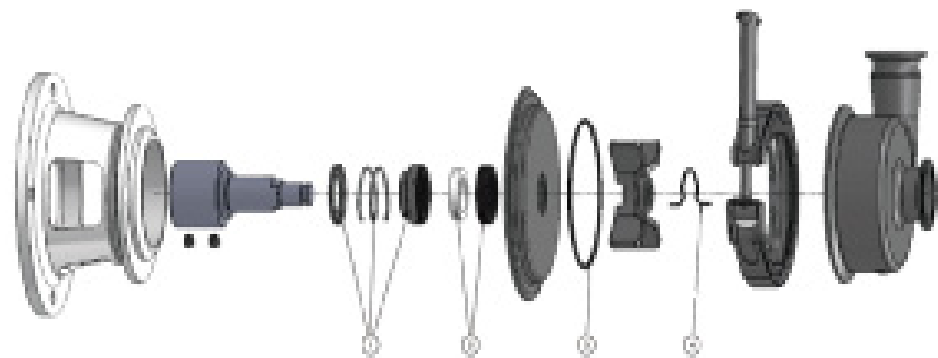
ITEM	PART NUMBER	DESCRIPTION	QTY
1	43118	Replacement cover screw	2
2	43137	Replacement Standard cover	1
3	10600	Replacement fresh air cover	1
4	43252	Replacement long screw	2
5	43253	Replacement short screw	1
6	10601	Replacement O-ring for fresh air cover	2
7	NS5492	Replacement lock washer	3
8	43115	Replacement black coil	1
9	43108	Replacement top plug	2
10	43104	Replacement piston (includes #'s: 9-11)	2
11	43107	Replacement bottom cap	2
12	43102	Replacement O-ring	2
13	NS5510	Replacement screw for bridge	1
14	NS55492	Replacement lock washer	1
15	NS43150-2	Replacement S/S piston seat	2
16	NS543150-3	Replacement connector bridge	1
17	43171	Replacement rubber side plug	2
18	43149	Replacement knob	3
19	NS5481	Replacement washer	6
20	43125	Replacement side contact pin	2
21	NS43124	Replacement center contact pin	1
22	NS43150-7	Replacement center o-ring	1
23	43181	3/8" x 2.5" galvanized nipple	1
24	43157	Replacement Parlor Style Base Kit (includes #'s 13-24)	1
	43105	Replacement Repair Kit (includes #'s 9-12)	

### Thomsen Internal Milk Pump



ITEM	PART NUMBER	DESCRIPTION	QTY
1	59794	Replacement #4 O-ring	1
2	59795	Replacement #5 O-ring	1
	59796	Replacement #6 O-ring	1
2	59762	Ceramic Seal for internal Seal kit	1
3	59793	Replacement dmall O-ring	2
4	59761	Spring for internal Seal kit	1
5	59765	Impeller clip for Thomsen #4, #5 and #6 pump shalt	2
	59760	Internal seal kit for Thomsen #4, #5 and #6 pumps (includes: 1-5)	

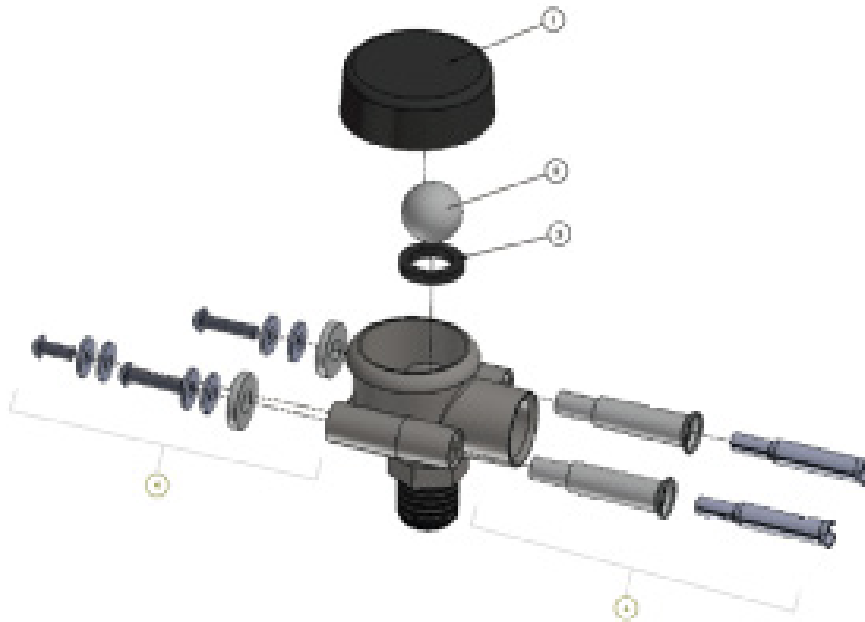
### Thomsen External Milk Pump



ITEM	PART NUMBER	DESCRIPTION	QTY
1	59771	Rotary Seat Assembly	1
2	59770	Ceramic wear ring for Thomsen #4, #5 and #6	1
3	59794	Replacement #4 O-ring	1
	59795	Replacement #5 O-ring	1
	59796	Replacement #6 O-ring	1
4	59765	Impeller Clip for Thomsen #4, #5 and #6 pump shaft	2
	59750	External seal kit for Thomsen #4, #5, #6 pumps (includes: 1-4)	3

## #43260

Replacement thread on heavy duty stallcock for BM



ITEM	PART NUMBER	DESCRIPTION	QTY
1	59794	Replacement #4 O-ring	1
2	59795	Replacement #5 O-ring	1
	59796	Replacement #6 O-ring	1
2	59762	Ceramic Seal for internal Seal kit	1
3	59793	Replacement dmall O-ring	2
4	59761	Spring for internal Seal kit	1
5	59765	Impeller clip for Thomsen #4, #5 and #6 pump shalt	2
	59760	Internal seal kit for Thomsen #4, #5 and #6 pumps (includes: 1-5)	