

# Freeliners

Call 1-800-572-5824 ext. 224 to place your ad

## Bulls

**REGISTERED HOLSTEIN BULLS:** We now have a nice selection of service age bulls, sired by top AI sires. Green Meadow Farms, Elsie, MI. 989-862-4291 or see our Web site at [www.greenmeadowfarms.com](http://www.greenmeadowfarms.com).

**SERVICE AGE HOLSTEIN BULLS.** Call Steve Alexander, 810-622-8545 evenings or 810-404-8546.

## Freeliner Policy

The Freeliners column is open to *current* MMPA members who wish to advertise—at no charge—goods or services relating directly to their dairy farm operations.

- An item submitted will be published for no more than two consecutive months (one month, unless otherwise requested).

- After that, it will be withdrawn.

- It will be published again for no more than two consecutive months only if the member resubmits the item by contacting their MMPA Member Representative or by writing or calling the Novi office.

- Reference to a name of a firm or other commercial enterprise with which a member is involved will be deleted, with permission of the member.

- If the member does not wish such deletion, he may choose to have the item published as a Classified Ad at the regular per-line Classified Ad rate.

- Freeliners must be received by the 10th of the month preceding the desired month of publication.

*Example:* to be included in the January issue, the freeliner must be at the MMPA office by December 10.

**SERVICE AGE BULLS,** Swiss Holstein/Jersey Holstein cross, 100% AI. 810-724-8825.

**REGISTERED HOLSTEIN BREEDING BULLS,** all AI sired from top bull, b&w, red, red carrier and some polled, high production, low SCC herd. Bulls are priced to sell. Ver Hage Holsteins, 269-673-4886 or 269-217-6076. [www.verhageholsteins.com](http://www.verhageholsteins.com)

## Cows & Heifers

**HOLSTEIN HEIFER CALVES FOR SALE:** Andrews University offers calves from high producing dams. Call Agriculture Dept. for information. 269-471-6312.

## Equipment

**USED SILO DOORS,** \$10/door. 810-724-8825.

**2,000 FT. OF RUBBER MAT,** 7/16 thick, 6 ft. wide, 100 ft. rolls and 40 ft. rolls available, used 2 ½ yrs., can be used for mattress top cover or alley mats, like new, \$12/linear ft. 989-386-3816.

**XR16A SEMEN TANK W/ 42 UNITS OF SEMEN.** 650 gal. Mueller high performance bulk tank w/ new compressor. DeLaval 3 in. pipeline, approx. 200 ft. DeLaval 78 pump w/ 5 HP motor. DeLaval double 4 parlor, used 4 yrs., out of barn. 989-551-0173.

**N.H. FP230 CHOPPER** w/ kernel processor, metal alert, tandems, inoculator kit, 8 ft. hay head, 3 row corn head. Corn head has only chopped 400 acres. All in exc. cond., \$27,500. 989-330-1365 or 989-866-2411.

## Dairy Equipment

**DOUBLE 10 PARALLEL, BLUE DIAMOND, RAPID EXIT PARLOR,** stainless enclosed cabinetry w/ advisory takeoffs, \$15,000. 231-768-5245.

## GENERATORS

Winpower & Katolight  
Stocking up to 100 KW  
**24 HOUR**

**EMERGENCY SERVICE**  
serving Michigan  
for the past 30 years

**800-345-1887**  
**MIDWEST POWER**  
**SYSTEMS**



**Lower feed costs.  
Maximize production.  
Balanced rations.**

New ingredients from your trusted source.

<b>Renew Meal™</b> 34% minimum protein 13% maximum crude fiber 4% minimum fat	<b>Citrus Pulp</b> 16% maximum fiber 6% minimum protein 2.1% maximum calcium 2% minimum fat
<b>Low Fat Hominy</b> 7% minimum protein 7% maximum fiber 4% minimum fat	All on DM basis

**Zeeland Farm Services, Inc.**  
MI: 866.888.7082  
WI: 800.523.6760  
Fax: 616.772.7067  
[www.zfsinc.com](http://www.zfsinc.com)

**Traditional ZFS Menu**  
Bakery meal, beet pulp, cereal feed, cottonseed, distillers, gluten, soybean hulls, soybean hull pellets, soybean meal, and more!

1995 MUELLER 4,000 GAL. BULK MILK TANK, 2 – 5 hp compressors and high speed washer, in great cond., make offer. DeLaval SST2 take offs and other parts, 32 units, some for parts, make offer. 1570 Case tractor, needs some repairs, \$5,000 or best offer. 616-262-0551.

## Wanted

MANURE PUMP, 6 in. on wheels. 231-924-2430.

PATZ LEFT SIDE DISC CHARGE BARN CLEANER. 616-896-7311.



**KATOLIGHT**  
POWER SYSTEMS SOLUTIONS

**IS "BUILT BETTER"**

Speed Monitor Light  
more accurate than voltmeter "old style"

Helical Gears

Steel Frame for rigidity and better air flow

100% Solid Epoxy Insulation

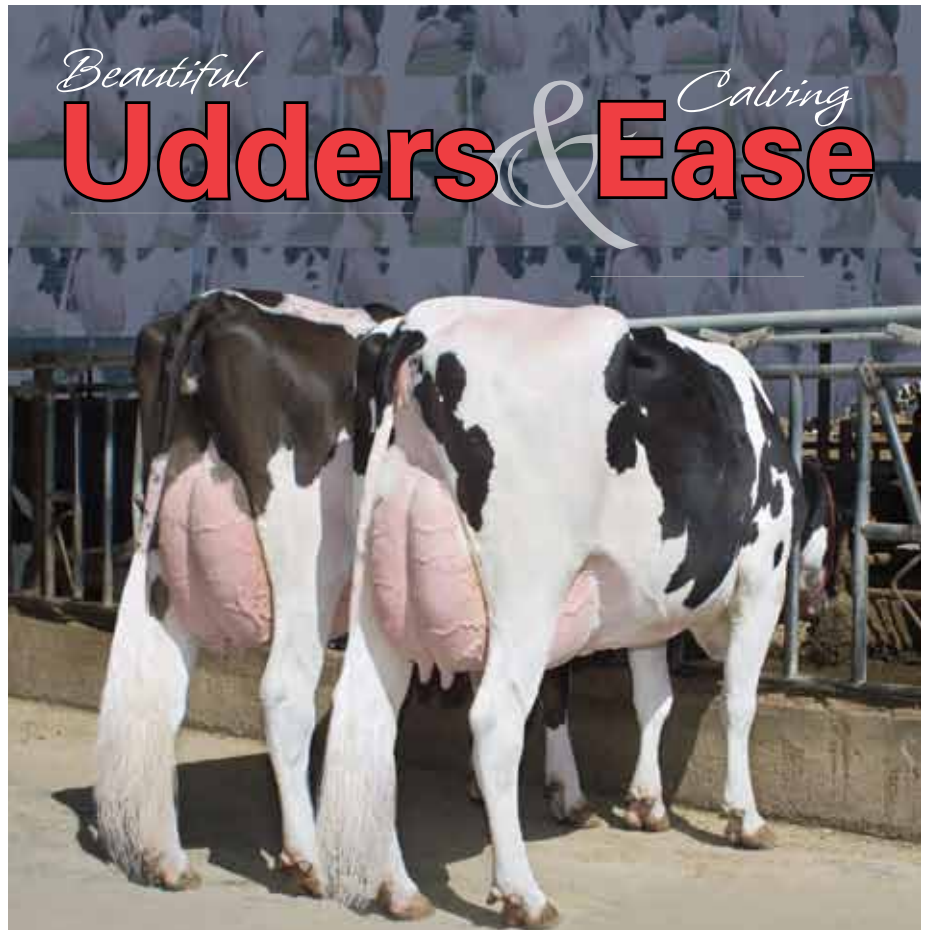


New 100% Solid State Voltage Regulator

Totally Brushless  
Reversing field alternative. No AC or DC brushes or collector rings.

1800 RPM Slow Speed long life

**PTO and Automatic  
Start Generators**  
**1-800-248-8070**  
**M-40 South**  
**Hamilton, MI 49419**



# Beautiful Calving Udders & Ease

		SSCE	%R	UDC	%R
014H005021	Target	5%	84	+2.44	91
014H004929	Man-O-Man	5%	83	+1.48	90
014H005010	Columbia	5%	83	+0.90	90
014H004099	Billion	6%	99	+0.98	95
014H004026	Airraid	6%	99	+2.09	97
014H005120	Eric	6%	85	+1.47	91
014H004766	Champ	6%	85	+1.46	91
014H005006	Cedric	6%	84	+0.99	90
014H005156	Mast	6%	83	+1.90	86
014H005223	Precision	6%	82	+0.90	82
202H000246	Braveheart	6%	80	+1.41	83
014H003913	Harry	7%	99	+1.30	96
014H004368	Kane	7%	98	+1.51	91
202H000127	Jobert	7%	94	+1.21	85
014H004670	Phil G	7%	93	+1.58	90
014H005095	Alando-Red	7%	92	+1.72	91
014H005058	Arick	7%	86	+1.72	89
014H004599	Abraham	7%	85	+0.99	89
014H005154	Baymont	7%	84	+2.13	85
014H005271	Mike	7%	84	+0.92	80
014H005171	Abel	7%	83	+1.33	85
014H004625	Topeka-P-Red	7%	83	+1.27	89
014H005177	Phantom	7%	82	+1.38	83
210H000105	Ralstorm*RC	7%	82	+1.22	81
210H000107	Fibrax	7%	68	+2.00	80



Some of these and other sires are available in ACC-SS sexed semen. Visit [www.accelgen.com](http://www.accelgen.com) for an updated list of ACC-SS sires.

©2009 Accelerated Genetics. Source: 01/10 HA/USDA Genomic IB/MACE-USA. Photo: Robinson. ACC-SS should only be used for a single-use artificial insemination of bovine females that are not part of a timed AI or synchronization program or being flushed for embryo transfer. For optimum results, use only those highly experienced or A.I. techniques. ACC-SS is subject to availability. Accelerated Genetics, or its agents, will not make any guarantee or warranty on conception rates and/or gender ratio. ©2010 Accelerated Genetics. Artificial insemination services of the customer's sexed semen are for single use insemination only and not for multifertilization or embryo transfer. Not for resale. Customer sexed semen is produced by Saving Technologies using the proprietary technology of XY, Inc. U.S. Patent Nos. 5,165,788; 6,372,422; 7,094,527; 7,239,285. Various Patent XY is a trademark of XY, Inc.

### Contact Your Area Representative:

Tim Clark Eastern MI 810-845-7604  
Jack Van Hoven Western MI 616-540-2293

### Accelerated Genetics



800.451.9275 • [www.accelgen.com](http://www.accelgen.com)